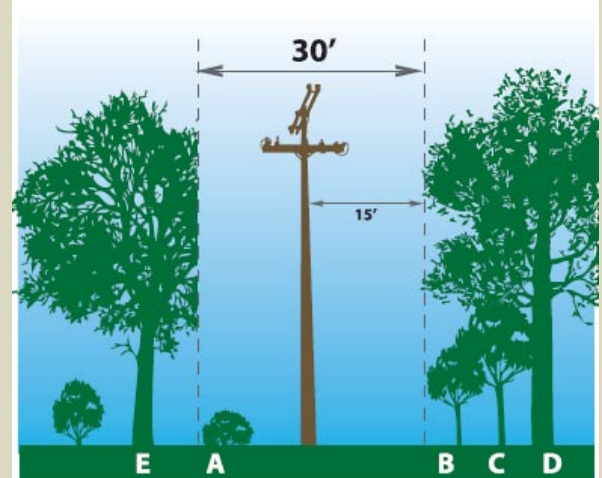
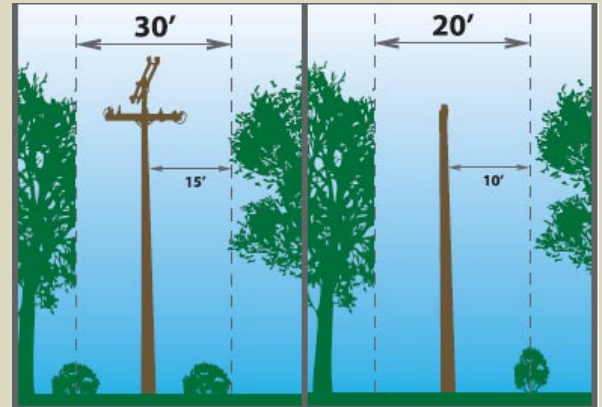


Plan Before You Plant

Members can do their part in keeping right-of-ways clear when landscaping or planting new trees. Mid-South Synergy does not recommend planting shrubs or trees on the right-of-way. During outages, bad weather or at night when trouble occurs, gaining access to power lines may damage shrubs located under the lines. However, if you must landscape adjacent to the right-of-way, careful

planning during plant selection and location is necessary to keep branches out of power lines once the shrubs or trees mature.

This will allow trees and shrubs to reach their maximum symmetry and beauty. Before planting a tree, it is wise to consider what the mature height of the tree will be. Different species of trees should be planted further distances from power lines.



For example,

- If landscaping is needed near right-of-way areas, choose low growth shrubs (example A).
- Smaller trees can be planted on right-of-way edges, at least 15' from power lines (example B).
- Medium trees need to be planted at least 35' away from lines (example C).
- Large trees need to be planted at least 45' away (example D) from overhead lines.
- Trees planted too close to the lines (example E) will always be misshapen by unavoidable pruning of limbs to prevent interference with power lines.

For more information

Contact Us:

(936) 825-5100 - Local

(888) 525-6677 - Toll Free

Office Hours

8:00 a.m. - 5:00 p.m.